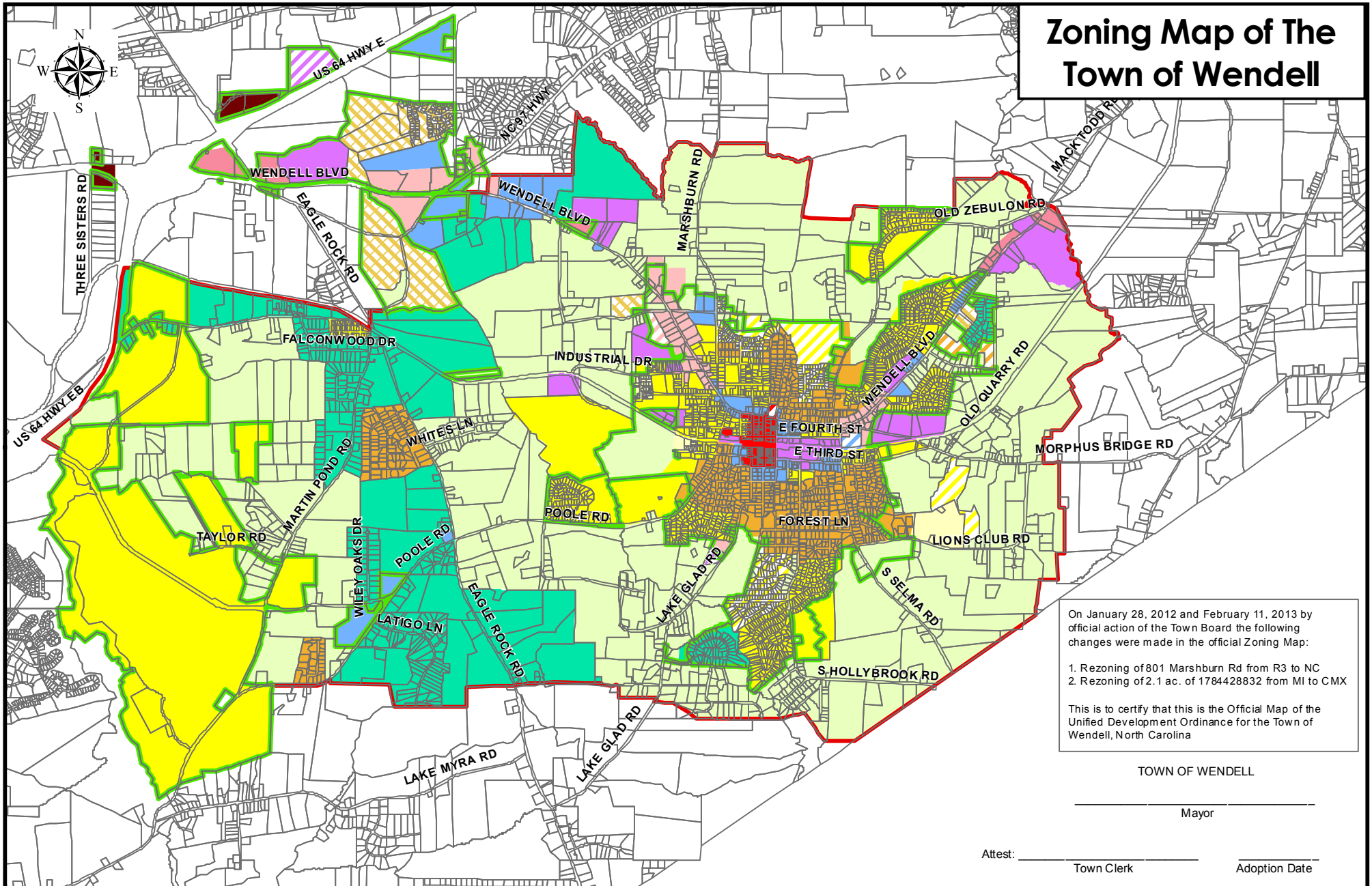


Zoning Map of The Town of Wendell



On January 28, 2012 and February 11, 2013 by official action of the Town Board the following changes were made in the official Zoning Map:

1. Rezoning of 801 Marshburn Rd from R3 to NC
2. Rezoning of 2.1 ac. of 1784428832 from MI to CMX

This is to certify that this is the Official Map of the Unified Development Ordinance for the Town of Wendell, North Carolina

TOWN OF WENDELL

Mayor

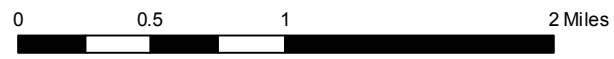
Attest: _____
Town Clerk Adoption Date

Legend

Wendell Corporate Limits
 Wendell ETJ
 Note: CU = Conditional Use

Wendell Zoning

CC	CH	CMX	CMX-CU	DMX	DMX-CU	MI	NC	R2	R3	RA	OSC
MI-CU	NC-CU	R2-CU	R3-CU	R7	Parcels						



R4	OSC
R4-CU	R7
RA	Parcels
RR	